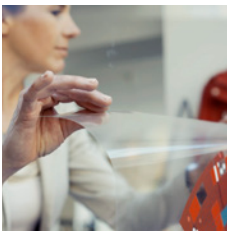


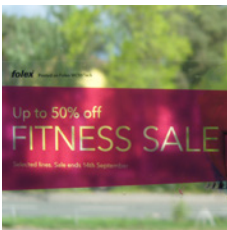


WOWTack S CL – PREMIUM DISPLAY FILM

Dry apply ultra removable polyester, patent pending



With Folex WOWTack it just got a lot easier and a lot simpler, in fact so much so anyone can do it. WOWTack uses a special surface WOW grip that means the graphic can be simply applied dry, therefore you do not need to wet the window and squeegee out the water, after application. Your graphic can be quickly applied and removed, with no residue or water. WOWTack is perfect for stickers, signage and dressing windows and screens for shops, offices and homes in fact anywhere you want impact for advertising, signage or information...and to get noticed!



SALES ARGUMENTS

- Ultra removable without residue
- Dry apply
- Requires no professional fitting experience
- Super clear, transparency
- Patent pending

TECHNICAL DATA	WOWTack S CL – CLEAR, GLOSSY
Ink compatibility	
Material	Dry apply ultra removable polyester, matt polyester release liner
Thickness	95 my
Roll length	20 m
Roll width	610 mm, 1067 mm, 1370 mm
Core diameter	76 mm